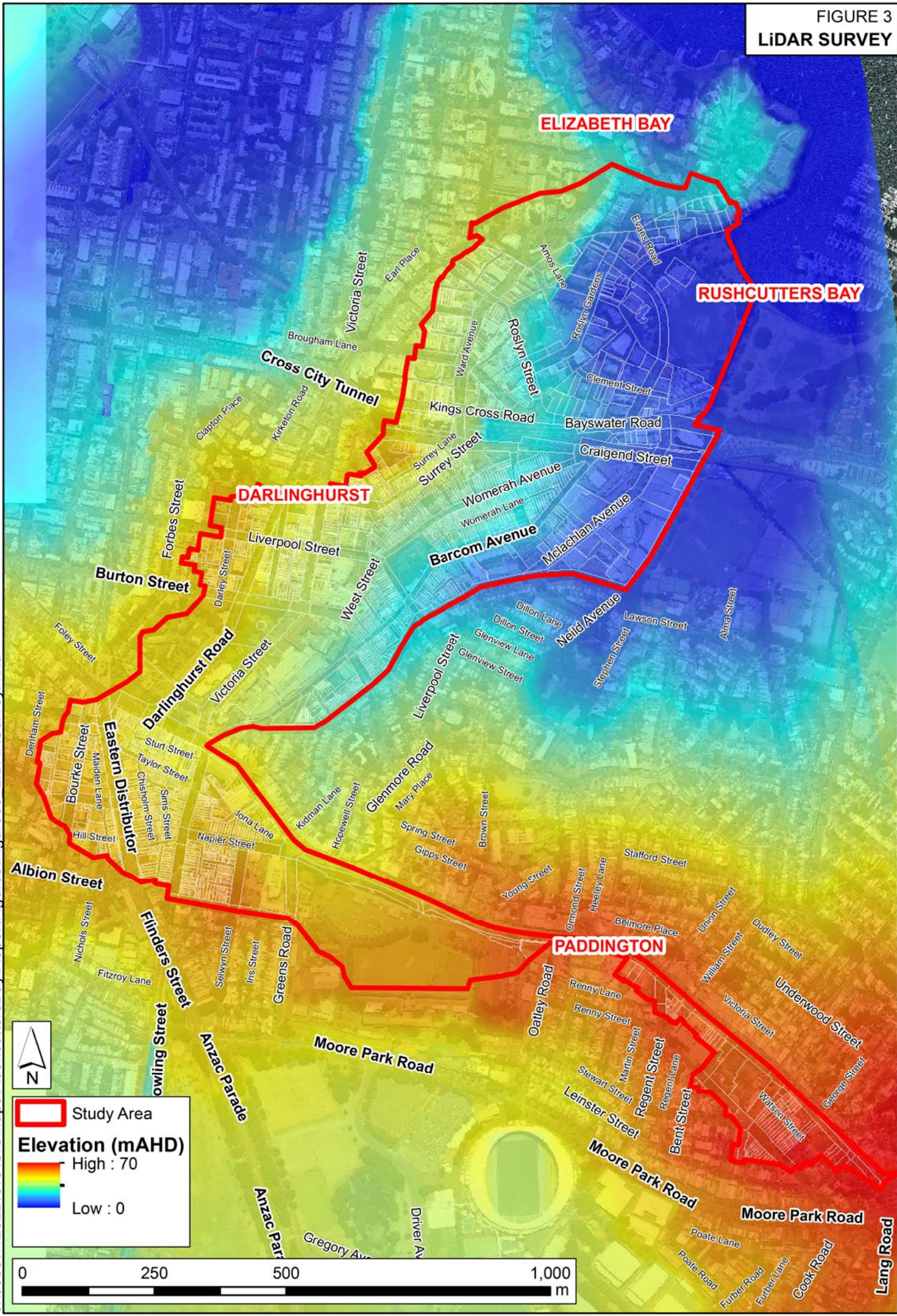


FIGURE 3
LIDAR SURVEY



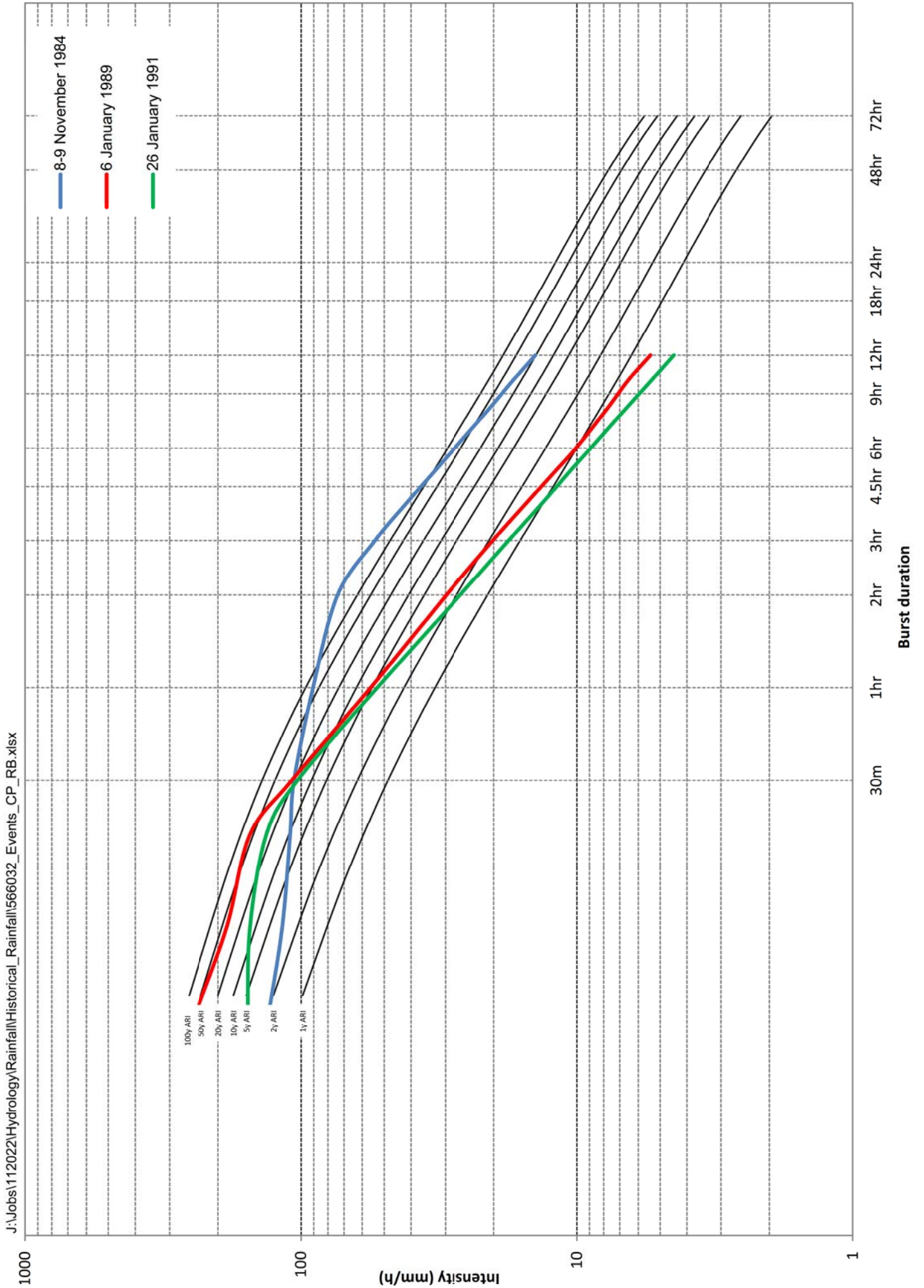
J:\Jobs\112022\GIS\GISMaps\RushcuttersBay\ReportFigures\Figure03_LIDARSurvey.mxd

FIGURE 4
RAINFALL GAUGES



J:\Jobs\112022\GIS\GISMaps\RushcuttersBay\Report\Figures\Figure04_RainfallGauges.mxd

FIGURE 5
IFD DATA AND RAINFALL COMPARISON
PADDINGTON GAUGE



J:\Jobs\112022\Hydrology\Rainfall\Historical_Rainfall\566032_Events_CP_RB.xlsx

FIGURE 6
QUESTIONNAIRE RESULTS

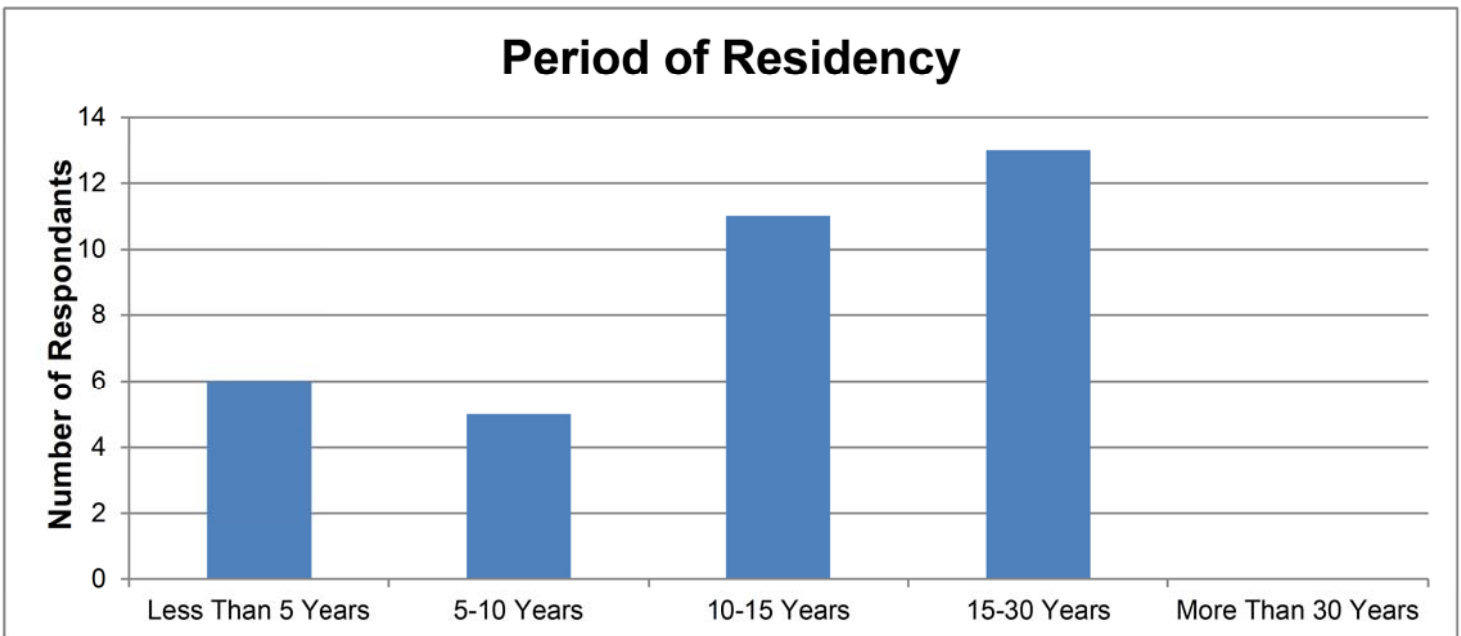
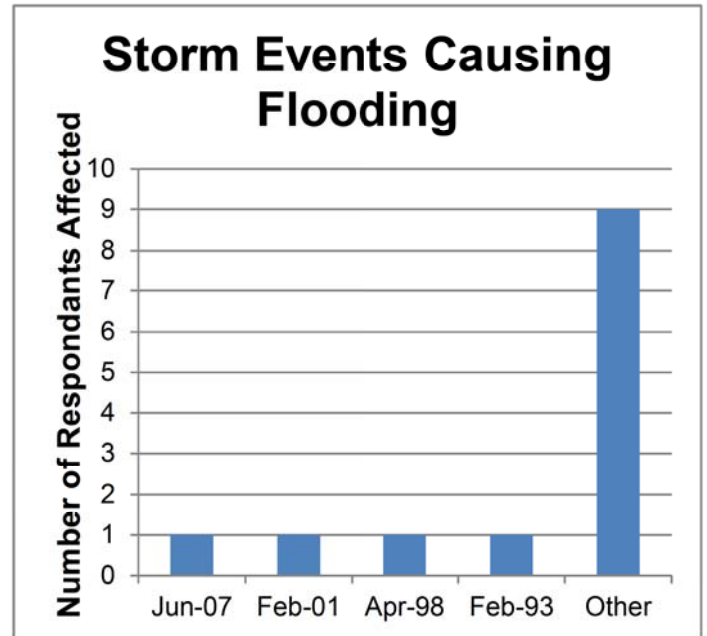
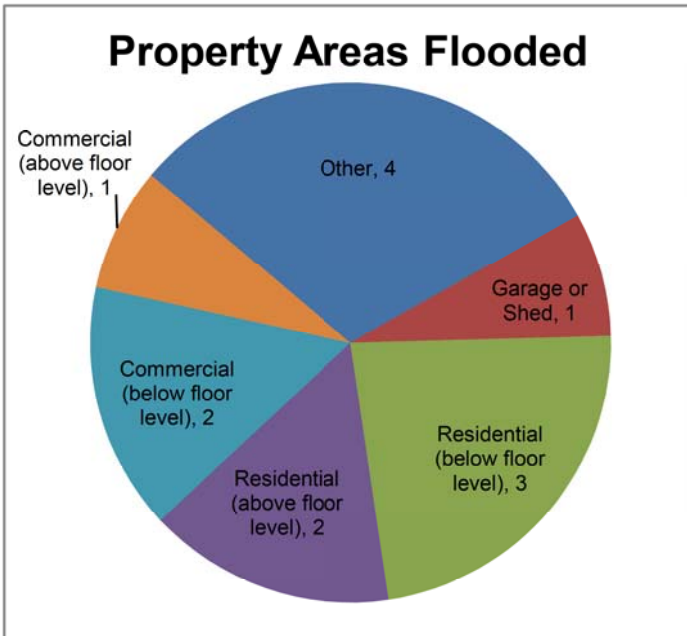
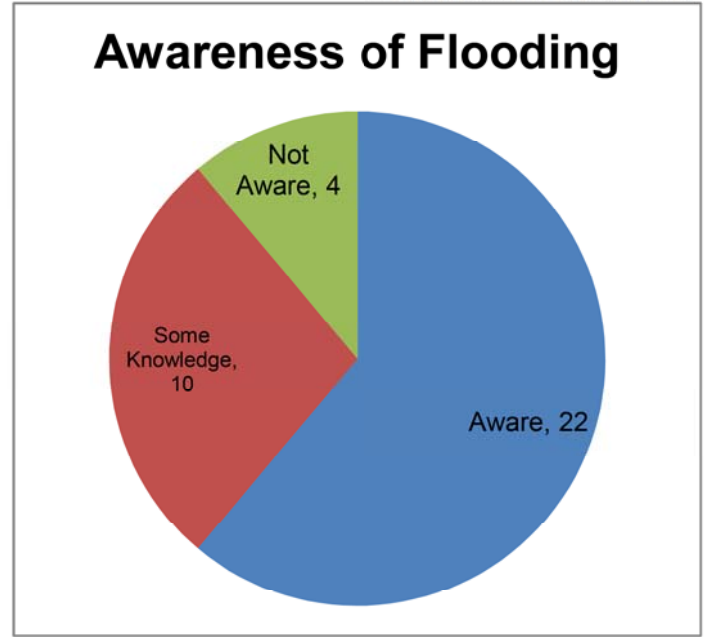
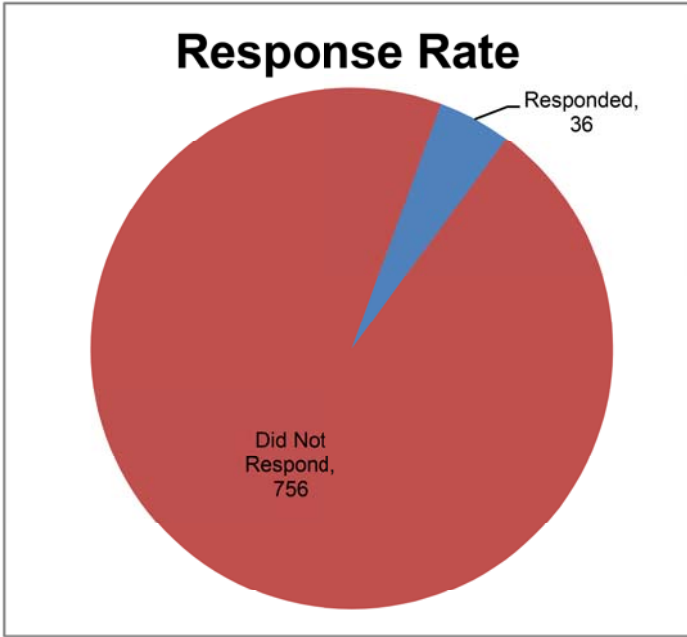
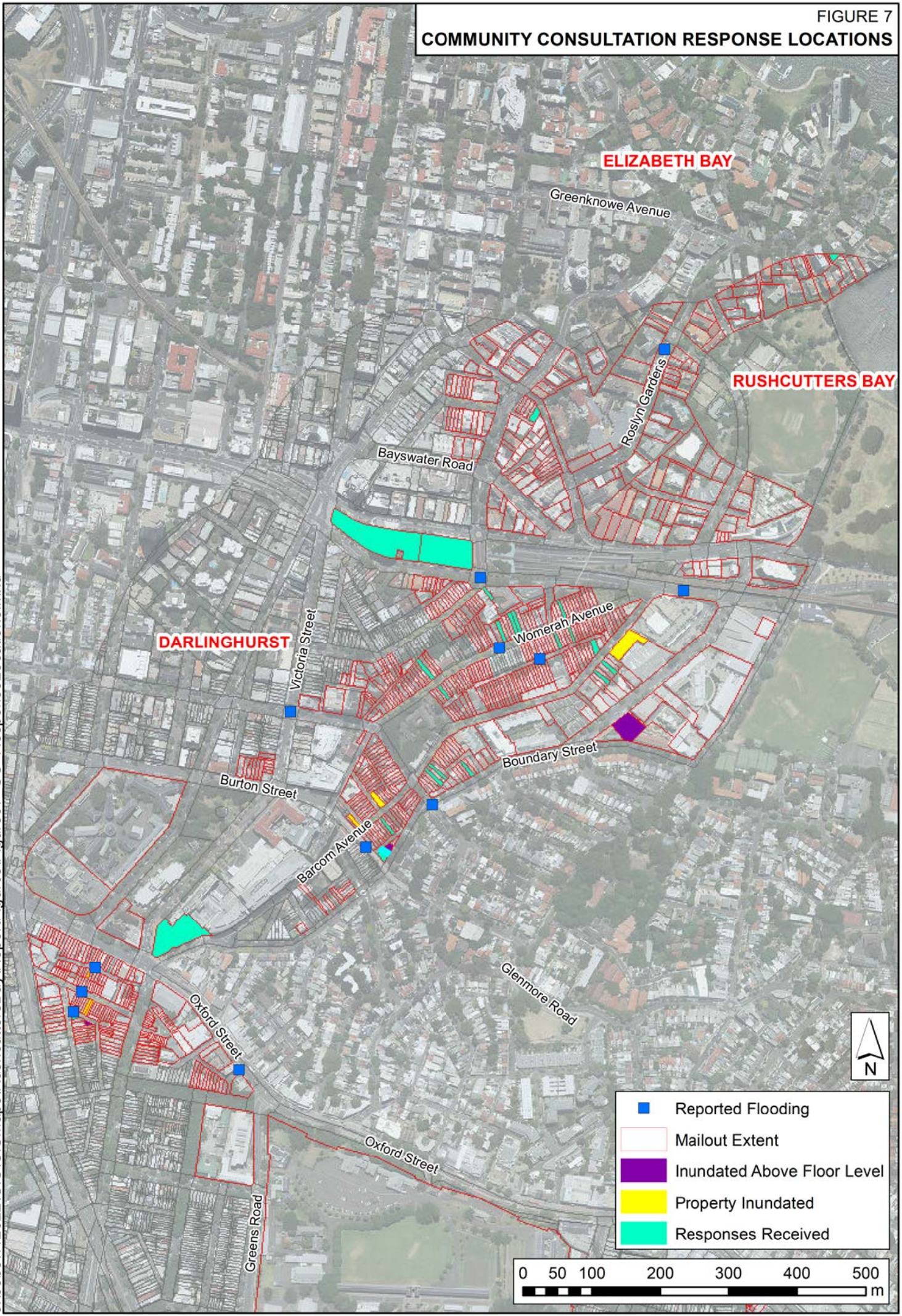
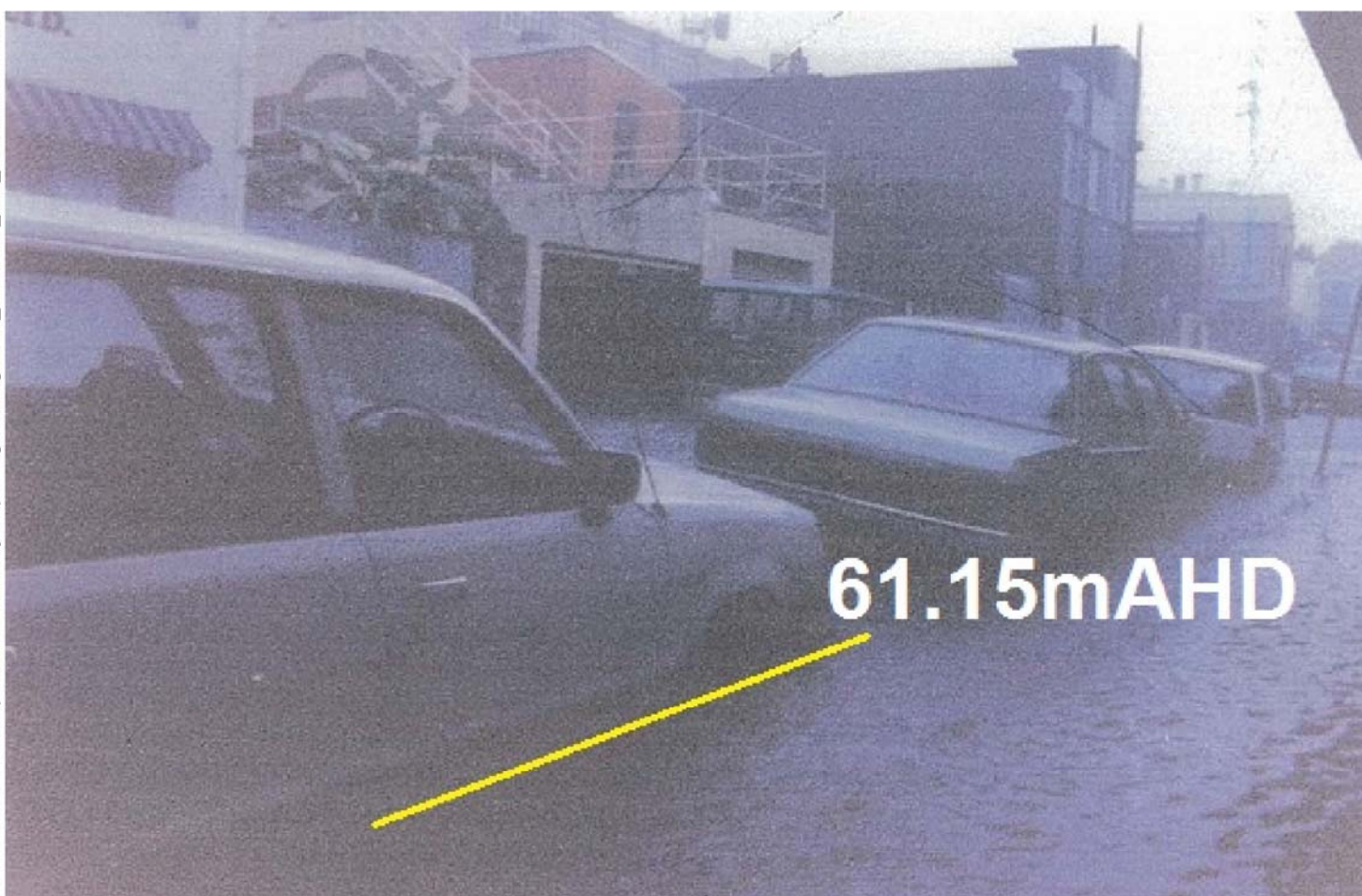


FIGURE 7
COMMUNITY CONSULTATION RESPONSE LOCATIONS



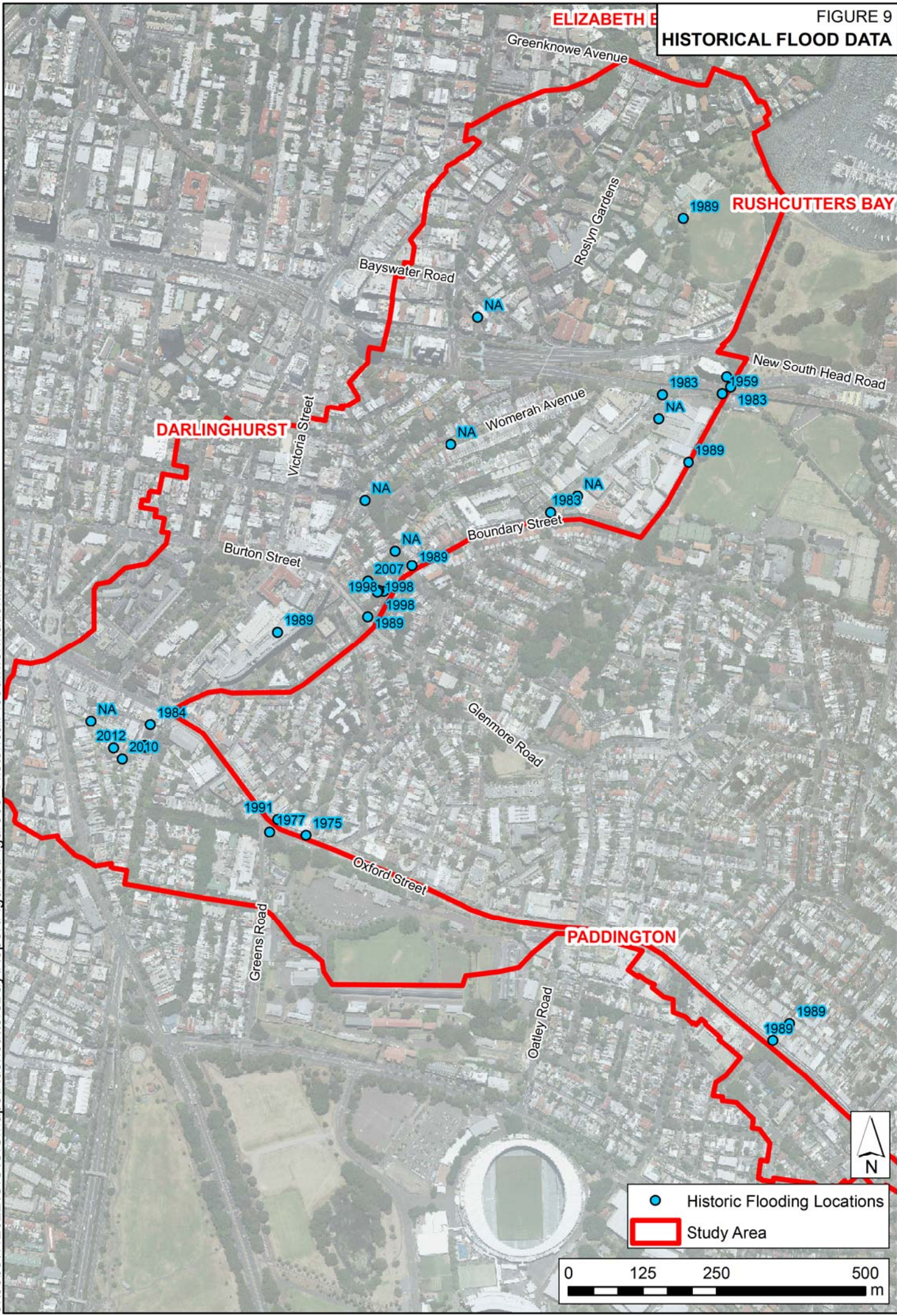


Flooding in Victoria Street, Paddington on January 6, 1989. This location is immediately outside the study area, though indicates the downstream flooding within the same catchment.



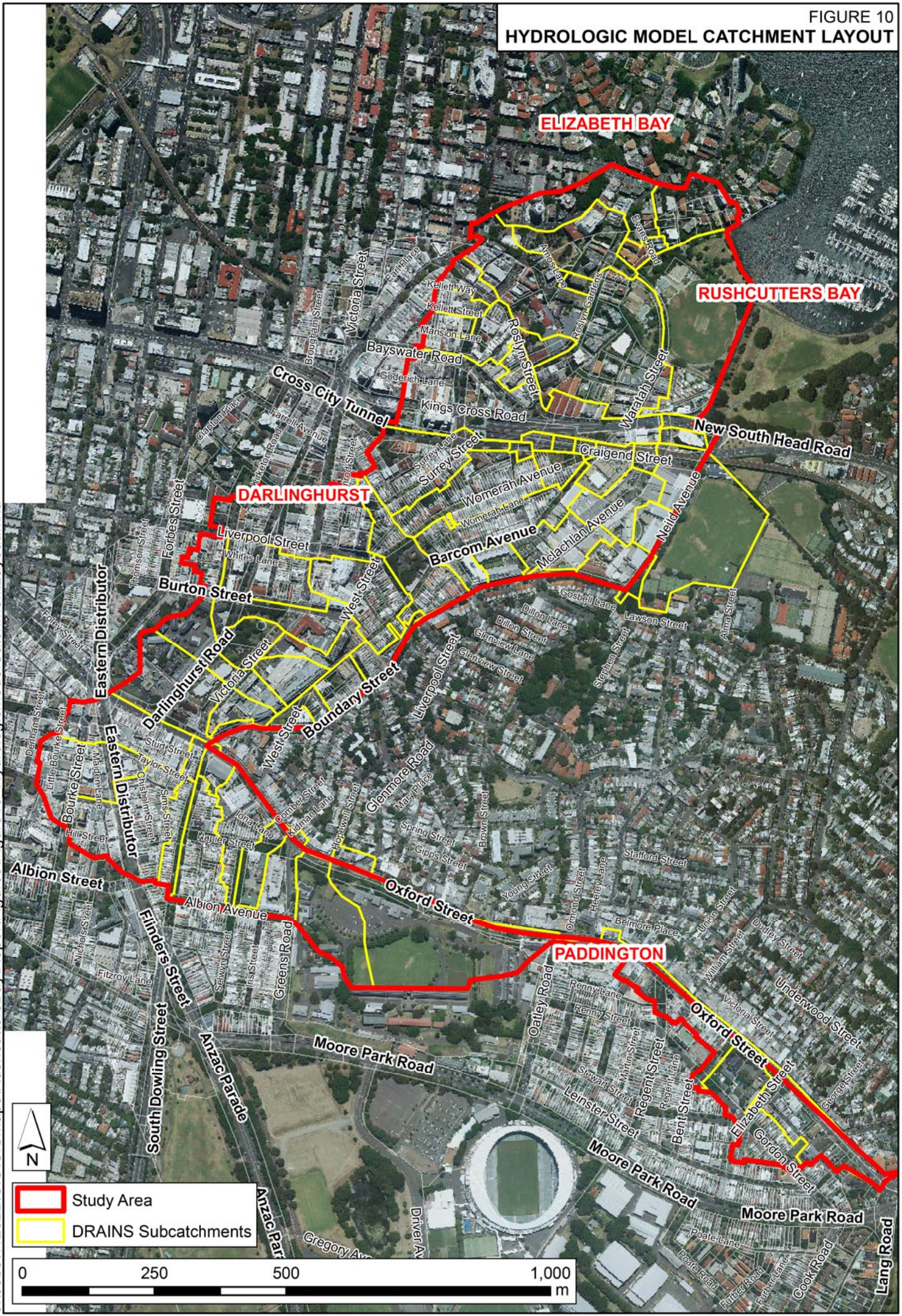
Flooding in Victoria Street, Paddington on January 6, 1989, showing the approximate elevation of flood waters.

FIGURE 9
HISTORICAL FLOOD DATA



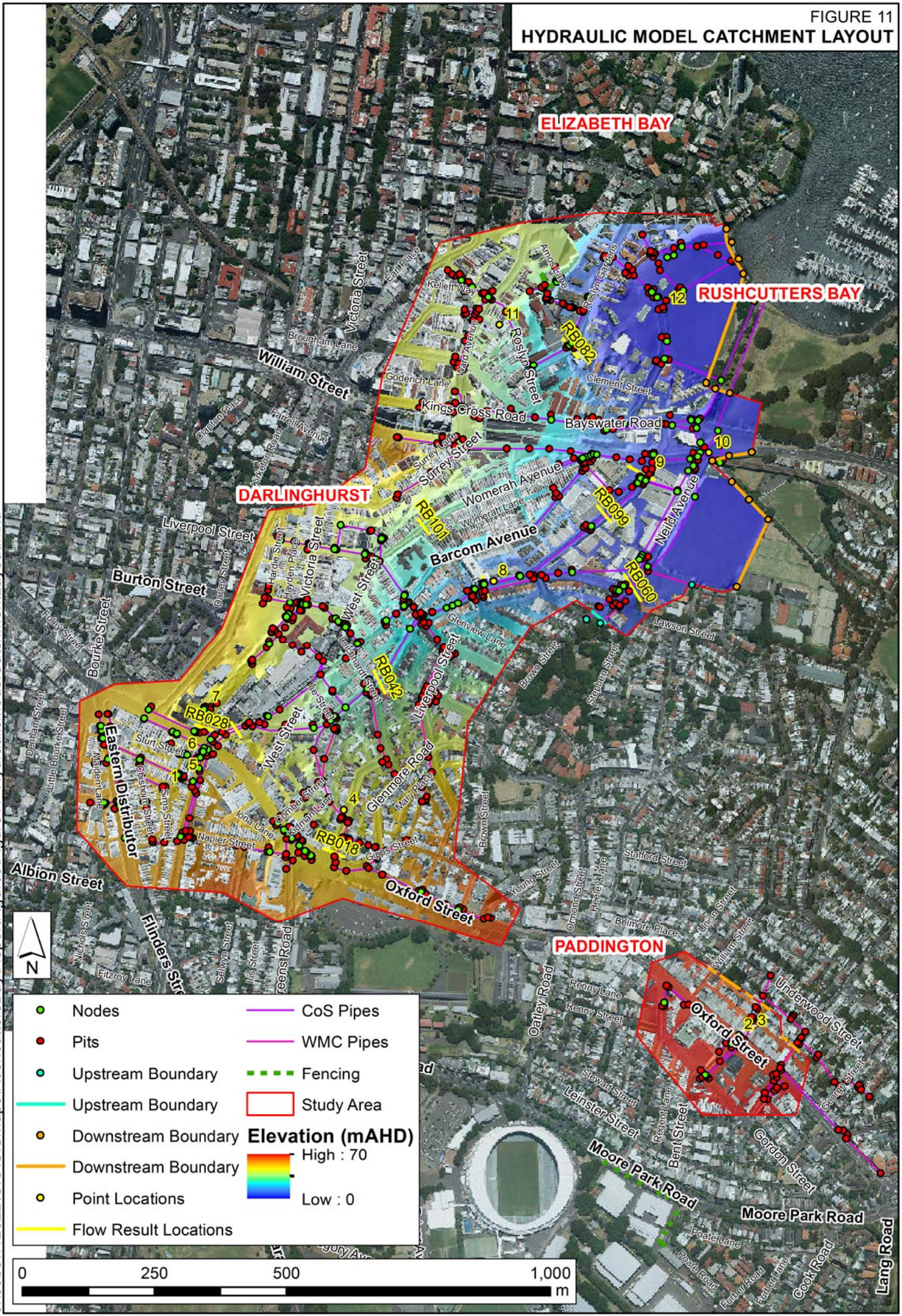
J:\Jobs\112022\GIS\GISMaps\RushcuttersBay\ReportFigures\Figure09_HistoricalFloodInformation.mxd

FIGURE 10
HYDROLOGIC MODEL CATCHMENT LAYOUT



J:\Jobs\112022\GIS\GISMaps\RushcuttersBay\ReportFigures\Figure10_HydrologicModelCatchmentLayout.mxd

FIGURE 11
HYDRAULIC MODEL CATCHMENT LAYOUT



ELIZABETH BAY

RUSHCUTTERS BAY

DARLINGHURST

PADDINGTON

- Nodes
 - Pits
 - Upstream Boundary
 - Downstream Boundary
 - Point Locations
 - Flow Result Locations
 - CoS Pipes
 - WMC Pipes
 - - - Fencing
 - Study Area
- Elevation (mAHD)**
- High : 70
- Low : 0



J:\Jobs\112022\GIS\GISMaps\RushcuttersBay\ReportFigures\Figure11_HydraulicModelCatchmentLayout.mxd

FIGURE 12
CALIBRATION RESULTS
PEAK FLOOD DEPTHS AND LEVELS
8-9 NOVEMBER 1984



J:\Jobs\112022\GIS\Maps\RushcuttersBay\ReportFigures\Figure12 CalibrationResults 8 9November1984.mxd



- Points of Interest
- 1.3 Observed Depth (m)
- 0.5 Modelled Depth (m)
- Study Area

Depth (m)

- < 0.1
- 0.1 to 0.2
- 0.2 to 0.5
- 0.5 to 1.0
- 1.0 to 2.0
- > 2

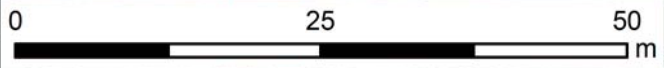
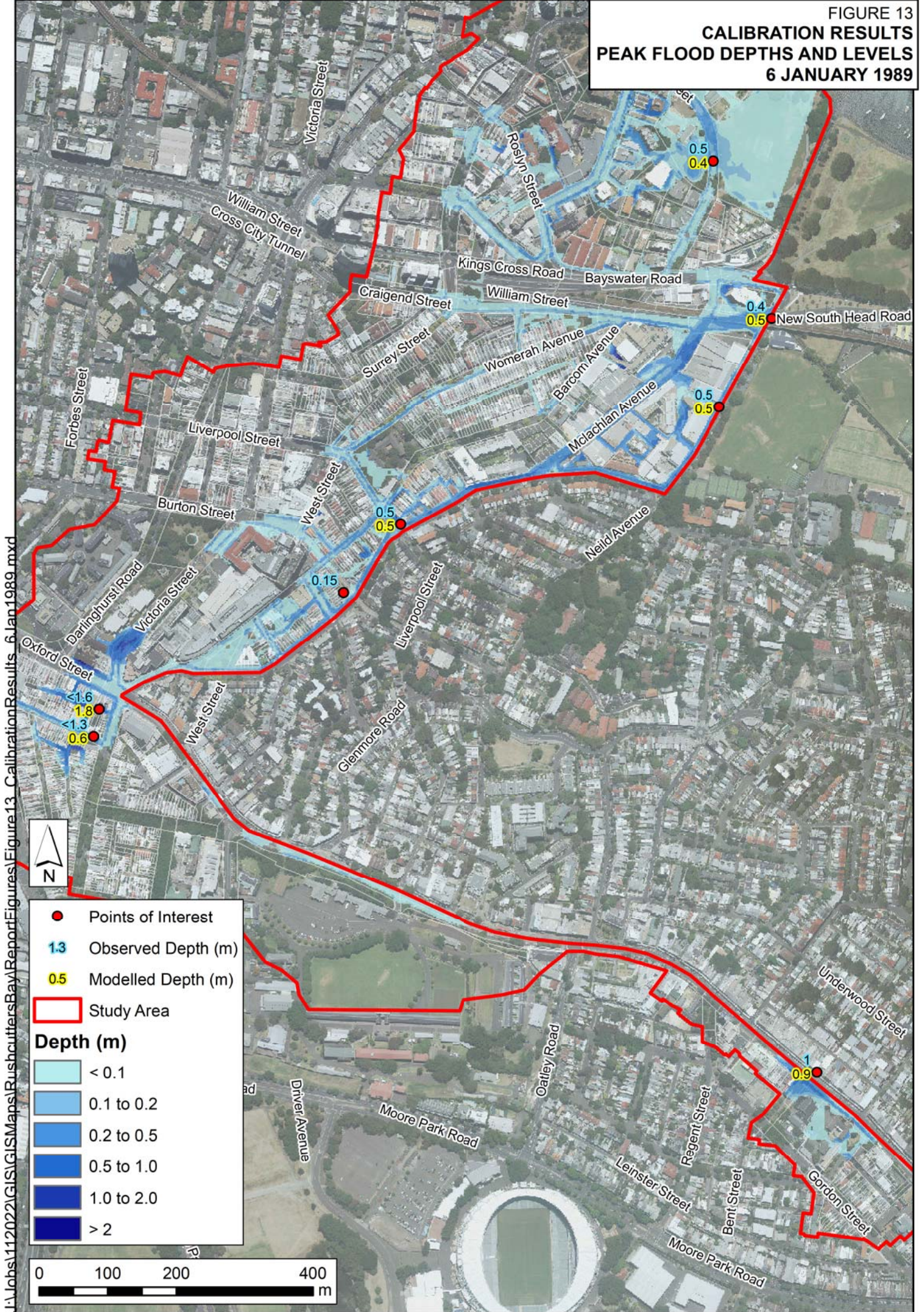
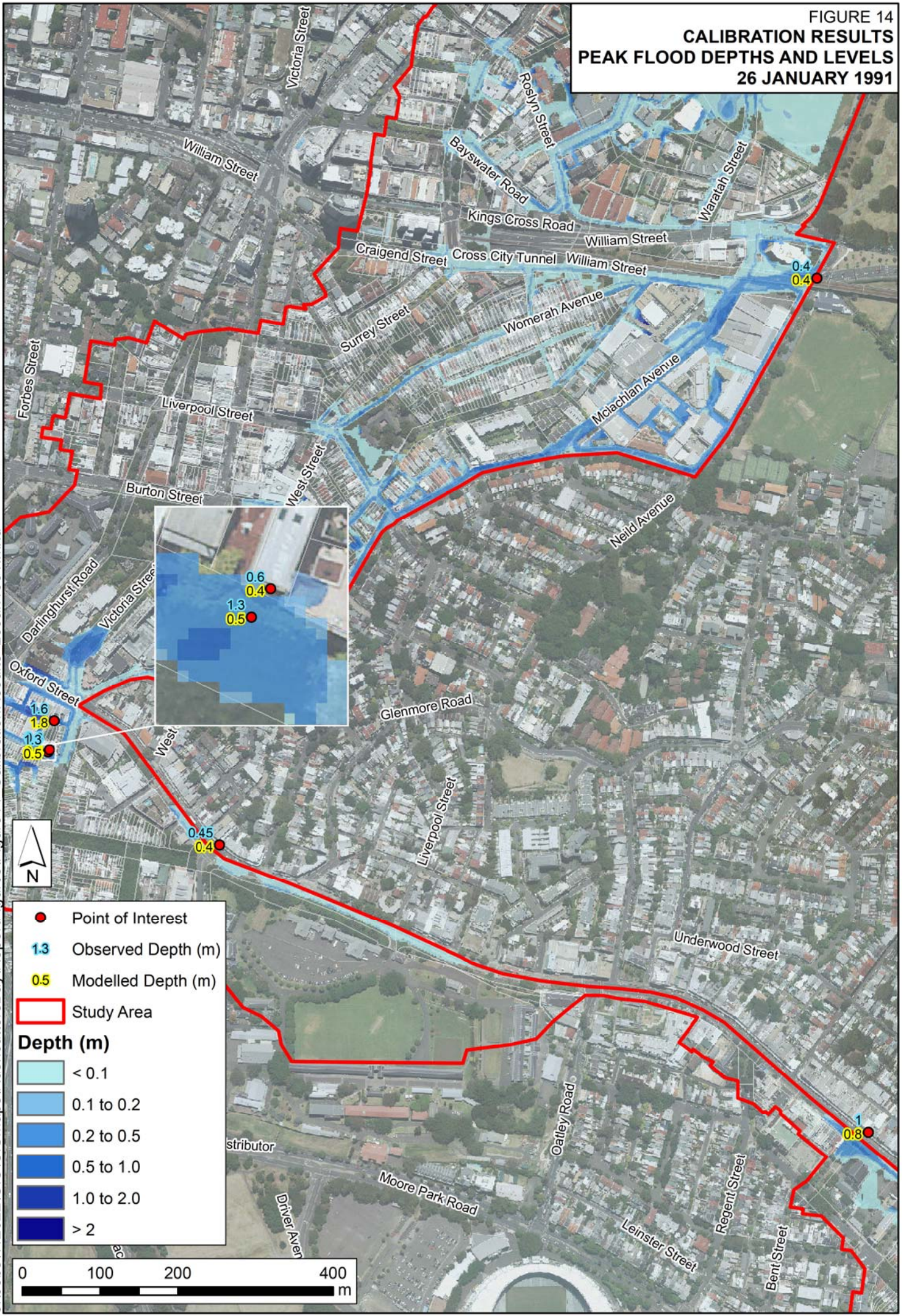


FIGURE 13
CALIBRATION RESULTS
PEAK FLOOD DEPTHS AND LEVELS
6 JANUARY 1989



I:\Jobs\112022\GIS\GISMaps\RushcuttersBay\Report\Figures\Figure13_CalibrationResults_6Jan1989.mxd

FIGURE 14
CALIBRATION RESULTS
PEAK FLOOD DEPTHS AND LEVELS
26 JANUARY 1991



J:\Jobs\112022\GIS\GISMaps\RushcuttersBay\ReportFigures\Figure14 CalibrationResults\26Jan1991.mxd

FIGURE 15
DESIGN FLOOD PROFILES
BOUNDARY STREET & MCLACHLAN AVENUE
OXFORD STREET TO NEW SOUTH HEAD ROAD

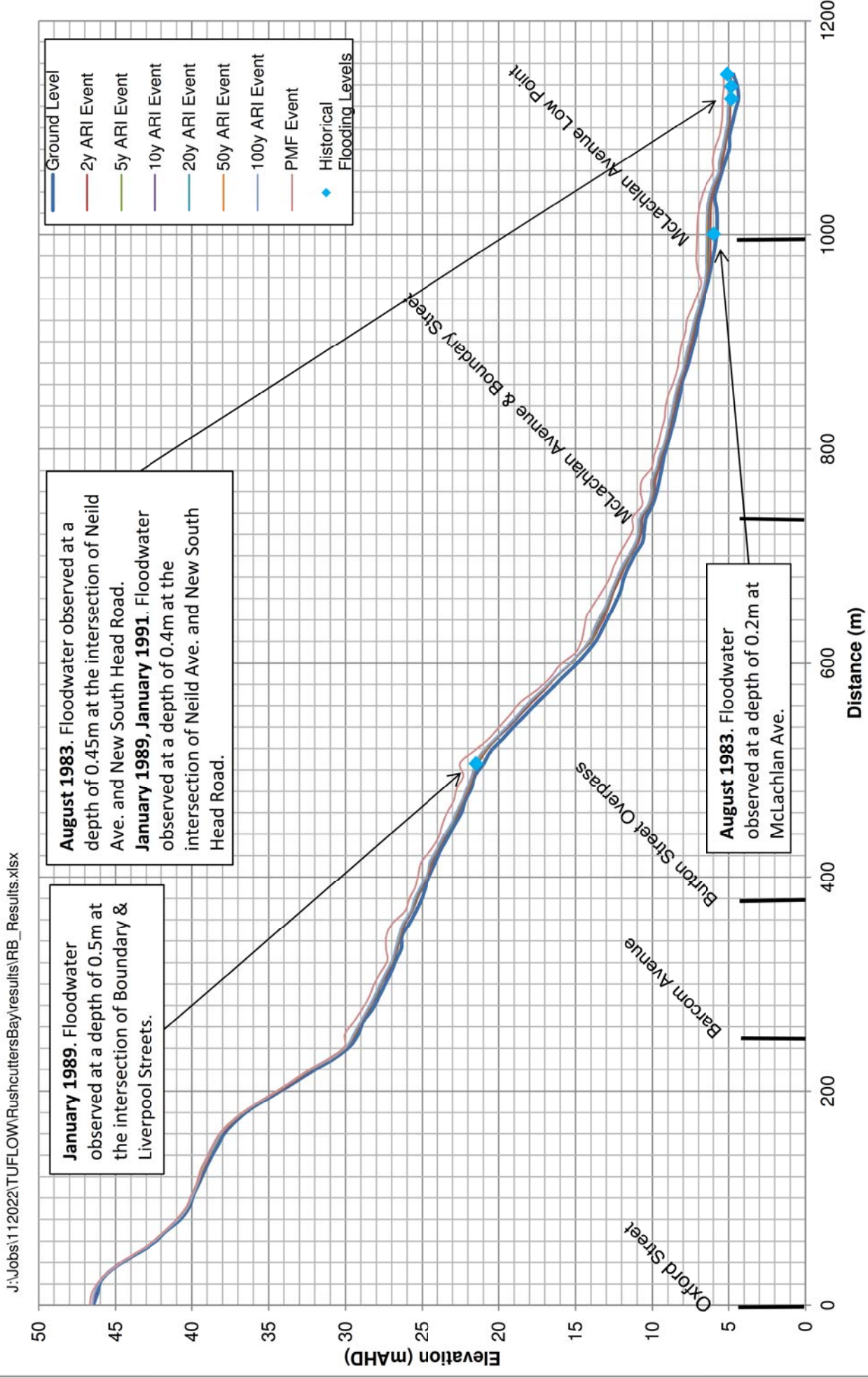
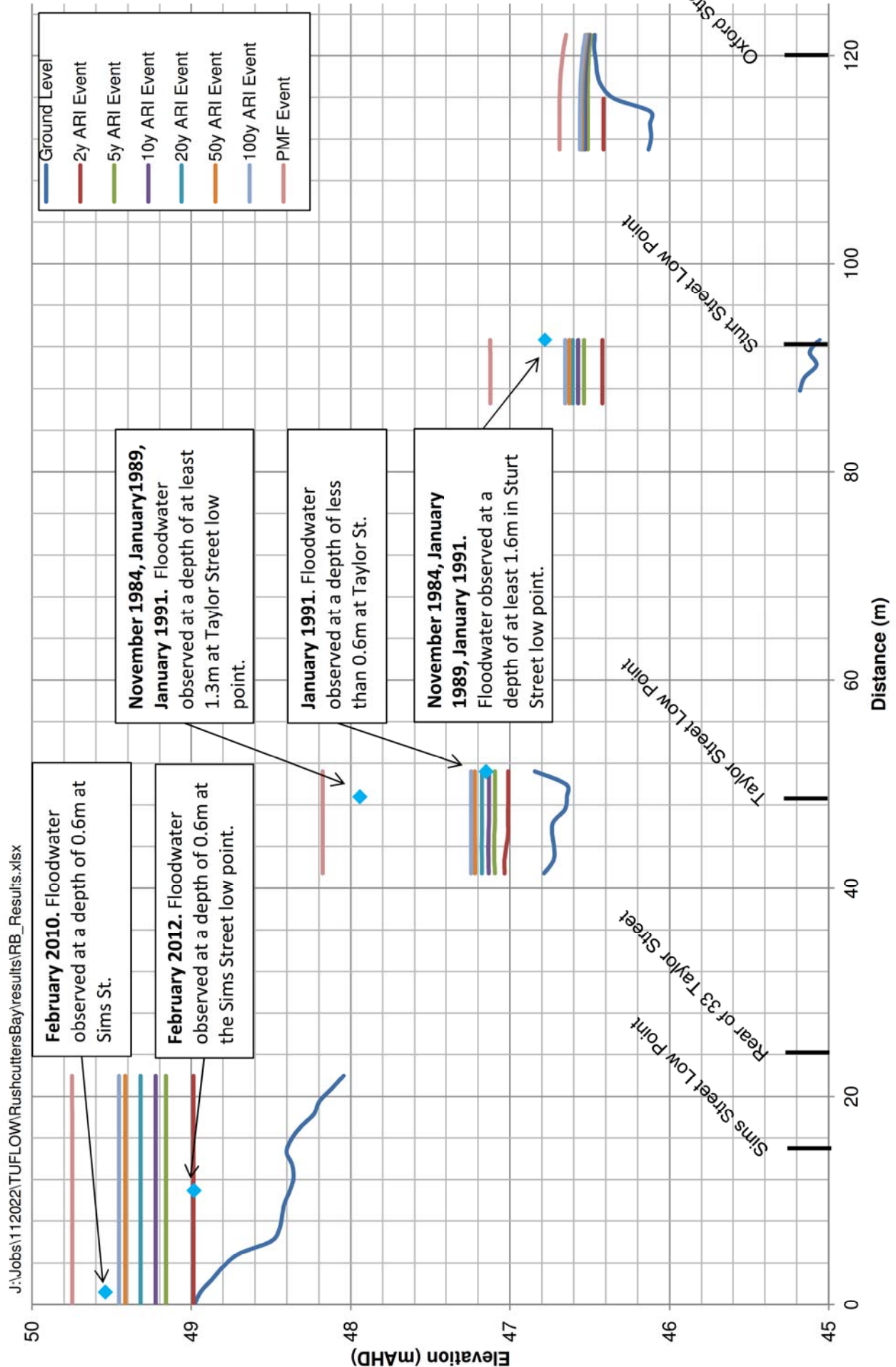


FIGURE 16
DESIGN FLOOD PROFILES
SIMS STREET, TAYLOR STREET & STURT STREET LOW POINTS
SIMS STREET TO OXFORD STREET



J:\Jobs\112022\TUFLOW\RushcuttersBay\results\RB_Results.xlsx

FIGURE 17
DESIGN FLOOD PROFILES
OXFORD STREET PADDINGTON
PADDINGTON UNITING CHURCH TO VICTORIA STREET

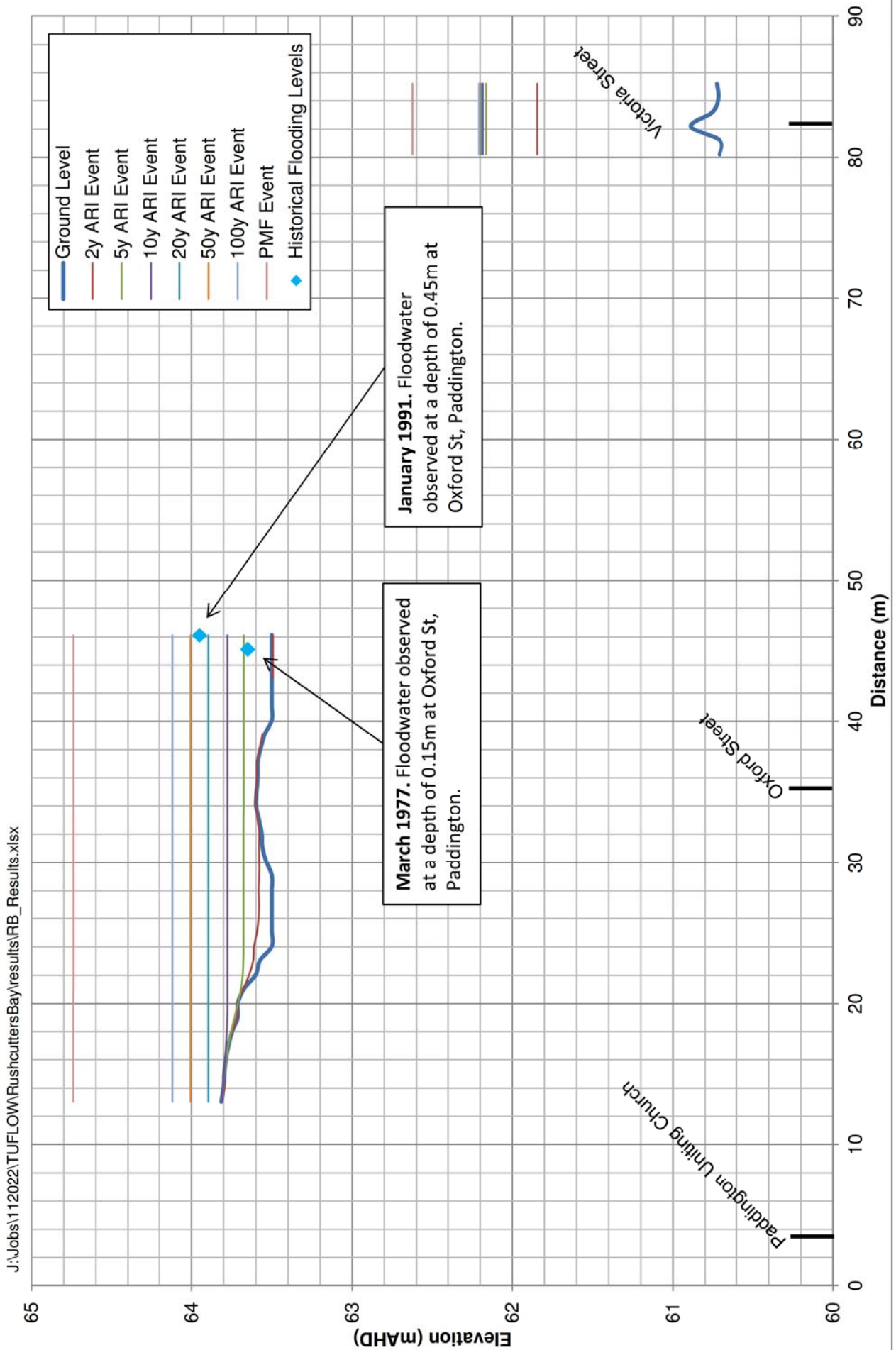


FIGURE 18
 PEAK FLOOD DEPTHS AND LEVELS
 2Y ARI EVENT

J:\Jobs\112022\GIS\GISMaps\RushcuttersBay\ReportFigures\Figure18_2Y_ARI_PeakFloodDepths_Levels.mxd

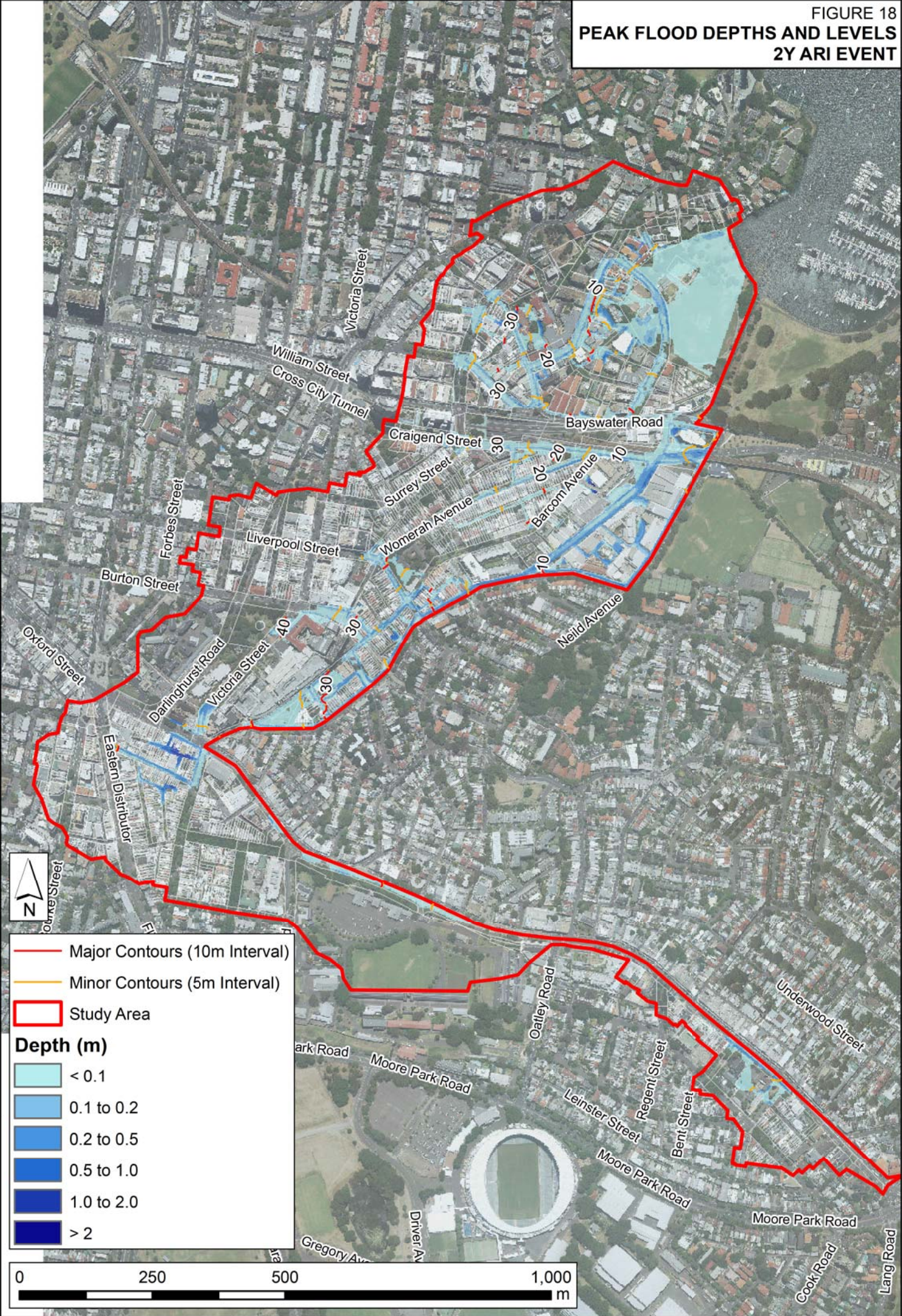


FIGURE 19
 PEAK FLOOD DEPTHS AND LEVELS
 5Y ARI EVENT

J:\Jobs\112022\GIS\GISMaps\RushcuttersBay\ReportFigures\Figure19_5Y_ARI_PeakFloodDepths_Levels.mxd

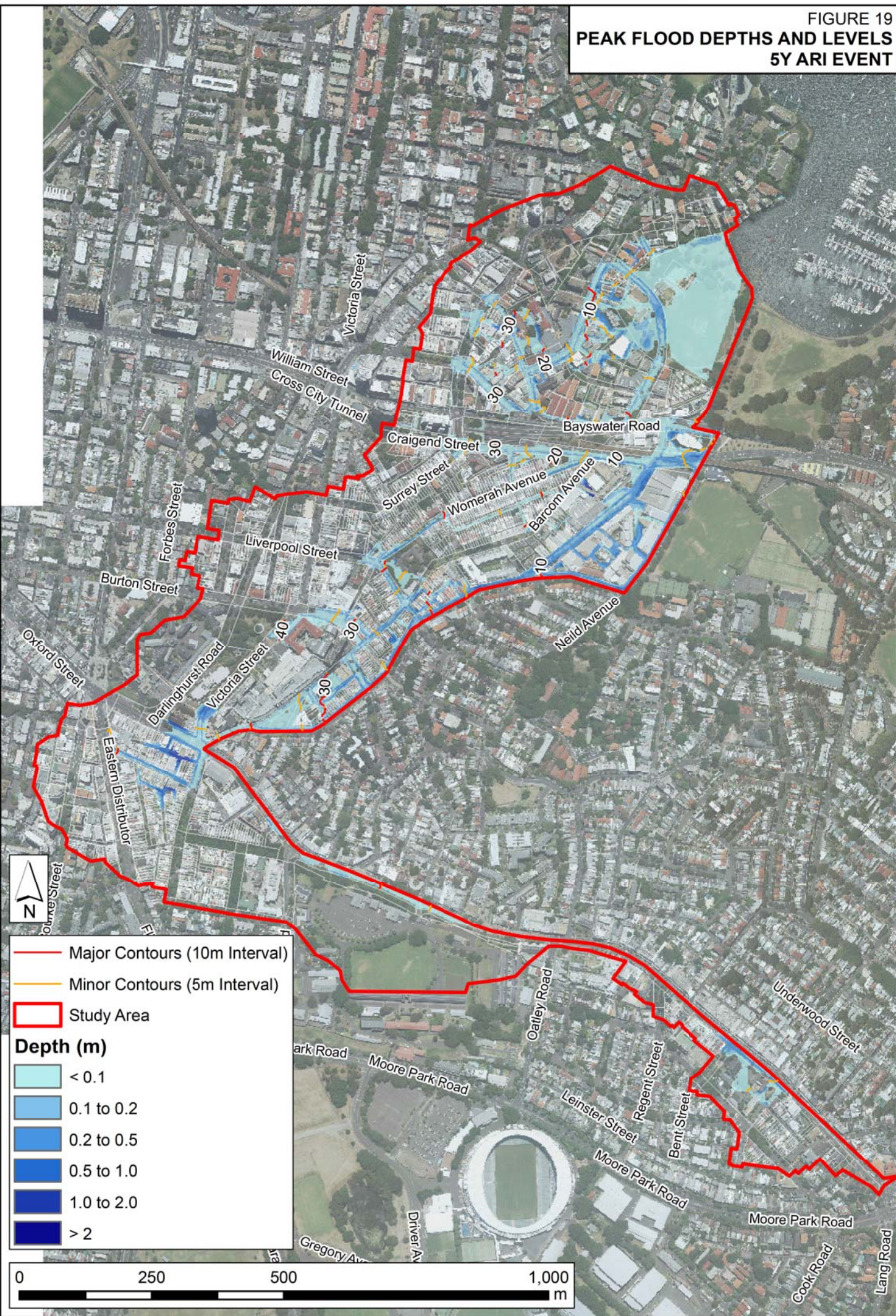


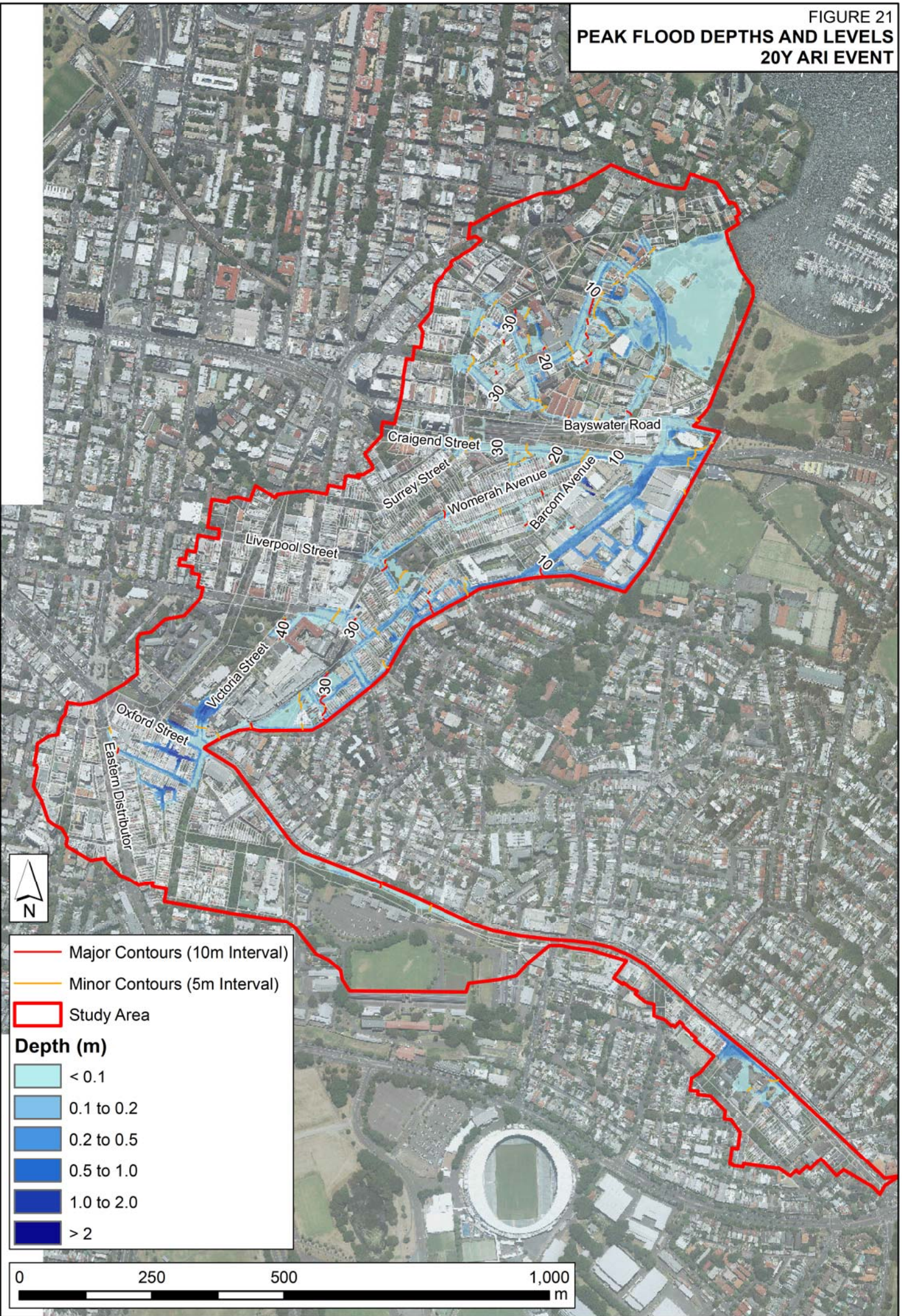
FIGURE 20
PEAK FLOOD DEPTHS AND LEVELS
10Y ARI EVENT

J:\Jobs\112022\GIS\GISMaps\RushcuttersBay\ReportFigures\Figure20_10Y_ARI_PeakFloodDepths_Levels.mxd



FIGURE 21
 PEAK FLOOD DEPTHS AND LEVELS
 20Y ARI EVENT

J:\Jobs\112022\GIS\Maps\RushcuttersBay\ReportFigures\Figure21_20Y_ARI_PeakFloodDepths_Levels.mxd



- Major Contours (10m Interval)
- Minor Contours (5m Interval)
- Study Area

Depth (m)

- < 0.1
- 0.1 to 0.2
- 0.2 to 0.5
- 0.5 to 1.0
- 1.0 to 2.0
- > 2



FIGURE 22
 PEAK FLOOD DEPTHS AND LEVELS
 50Y ARI EVENT

J:\Jobs\112022\GIS\GISMaps\RushcuttersBay\ReportFigures\Figure22_50Y_ARI_PeakFloodDepths_Levels.mxd

